

标准产品适用性广泛，更优多种可选配置供选择  
Versatility comes standard. The rest is optional.

# H系列纸卷夹(小型) Light Capacity Paper Roll Clamps

标准夹板  
Herringbone



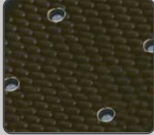
适用于夹持大多数类型的纸张。  
For most common paper types.

硫化无划痕黑色橡胶垫夹板  
RXH Rubber



适用于需要增加摩擦力的工况——例如牛皮纸、预印纸、石膏纸板、涂布箱纸板、半透明纸/防油纸。  
For papers that need more friction-kraft, preprint, gypsum board, liner board-coated, and glassine/greaseproof.

螺栓紧固式聚氨酯夹板  
Bolt-On UDP



适用于新闻纸、铜版纸或任何需要增大摩擦力以提供足够的夹持力的工况。(聚氨酯夹板提供可压缩的高摩擦表面)  
For newsprint, coated stock or any paper requiring increased friction to apply adequate clamp force(UDP provides a compressible high friction surface).

螺栓紧固式橡胶垫夹板  
Bolt-On Rubber



适用于任何需要增加摩擦力以减少必要的夹持力的工况。(硫化无划痕黑色橡胶垫夹板或表面光滑的夹板也适用)。  
For newsprint, coated stock or any paper requiring increased friction to apply adequate clamp force(Also available as RXH surface).

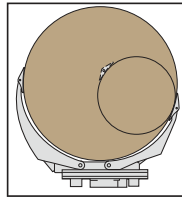
标准夹板(软性纸专用)  
Herringbone(Tissue)



优良的摩擦表面，适于搬运软性纸纸卷。多种优化的夹板外形适用于搬运不同密度的软性纸。  
Excellent friction with grabbing tissue. Multiple pad shapes optimized for different tissue densities.

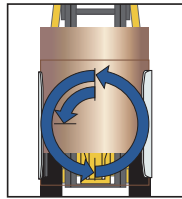


是小型叉车和步驾式叉车的理想选择。  
Ideal for use on smaller trucks and walkies.



固定框架-固定短臂式  
Fixed Frame-Fixed Short Arm

超薄的夹板外形，可搬运最大(或接近)直径的纸卷。可实现360°连续旋转。具有两组液压功能。  
Provides an extremely thin arm profile at or near the maximum roll diameter. Continuous 360° rotation. Double hydraulic function.



360°旋转  
360° Rotation

全方位360°旋转，可便捷地水平搬运表面不平的纸卷，也可在任何情况下的对纸卷进行对中。  
Rotates a complete 360° allowing for easy bilge handling on uneven surfaces, as well as correct alignment with rolls in any situation.

## 可选件与附件 Options and Accessories



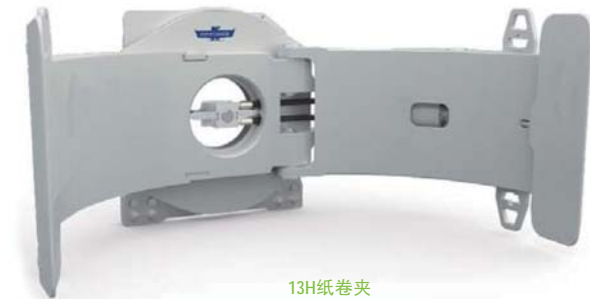
液压式夹紧力控制装置HFC  
HFC™-Hydraulic Force Control  
HFC是一种通过感应货物重量、从而按比例进行夹紧力调定的液压式夹紧力自动控制的装置。  
Automatic clamp force system that change the clamp force proportional to load weight by continuously sensing how much hydraulic pressure is necessary to lift the load.



自适应夹紧力控制装置AFC  
AFC™-Adaptive Force Control  
AFC是一种通过电脑控制系统控制夹紧力大小，防止夹紧力过大或过小而造成纸卷损坏。(图示为AFC显示器)  
Computer-controlled system that prevents the driver from overclamping a load by controlling the clamp force. (AFC Digital Display shown).



180°旋转止动装置或ERC-电子式旋转角度控制装置  
180° Stop or ERC-Electronic Rotational Control  
可在旋转至180°时止动，自动调整夹板与纸卷同轴对齐，也可调整纸卷与地面平齐。  
Provides 180° stops during rotation, automatically aligning pad to roll and the roll to ground.



13H纸卷夹  
承载能力最大可达1300kg  
13H CARTON CLAMP  
Capacities up to 1300kg

卡斯卡特(厦门)叉车属具有限公司

cascade xiamen forklift truck attachment co.,ltd.

地址: 厦门市海沧新阳工业区阳光路668号 邮编: 361026 电话: 0592-6512500 (总机) 0592-6512570 (直线) 传真: 0592-6512571 xm.cn 1212780 R0 01/2017

www.cascorp.com.cn

cascade@cascorp.com.cn



官方微信号 天猫旗舰店

所有的13H的纸卷夹都采用以下业内独家流线型铸件，并尽可能采用经久耐用的结构。  
All 13H Paper Roll Clamps use the following industry-exclusive contoured castings to provide the most durable structure possible.

**铰接点铸件**  
Pivot Casting



可定制外形的铰接点所受的压力最小化。  
Pivot joint stress minimized with custom shape.

**活塞杆固定端铸件**  
Cylinder Rod Anchor Casting



高强度、可定制外形的铸件，自重更轻，更耐用。  
High strength custom casting is lightweight and durable.

**薄型夹板**  
Thin Pad Profile



可紧密堆放货物或便捷地分开纸卷。  
Permits close stacking and ease of roll breakout.

**夹板链接杆与销轴**  
Pad Link and Pin



夹板尖端可便捷地楔入紧密的纸卷堆垛缝隙中掬持纸卷。  
Facilitates tip loading during breakout of tightly stacked rolls.

**可修复的耐磨块**  
Rebuildable Wear Tile



磨损后只需在表面加焊耐磨块而无需替换整个夹板。  
Allows wear tile to have hard surfacing added instead of replacing contact pad after wear.

**双齿齿轮合**  
Dual Tooth Engagement



最大的接触面积，更长的使用寿命。  
Provides maximum contact area for long life.

**便于维护保养**  
Easy to Service



回转配油阀支撑杆可以非常便捷地从框架前端面进行拆装。  
Revolving connection supports removable from the front for easy access.

**经久耐用的密封件**  
Durable Seals



油缸密封件极其经久耐用，寿命更长。  
Extremely durable cylinder seals for dependable life.

**单向阀与测试口**  
Check Valve and Test Port



当液压管路失效时，单向阀可确保货物不掉落。测试口便于进行故障诊断。  
Check valve guarantees the load is held in the case of hose failure. Test port enables easy diagnostics.

**夹板弹簧**  
Pad Springs



确保夹板准确定位于中间位置。  
Assures proper alignment of the pad.

**免润滑铰接环节**  
Lube-Free Pivot Pins

稳定性好，使用寿命长，避免润滑油污染纸卷。  
Provides stability, longer life and no grease on the paper rolls.

**夹板保护耳座**  
Pad Guard

减少夹板磨损。  
Reduces wear on the pad.

**简洁的管路布置**  
Clean Hose Routing

便于维护，出色的视野通透性。  
Provides ease of maintenance and excellent visibility.

**平滑的夹臂和夹板外形**  
Sleek Arm and Pad Profile

可轻松地掬持和堆放紧密的纸卷堆垛。  
Permits easy roll breakout and close stacking.

**视野优越**  
Exceptional Visibility

可精确地搬运双层纸卷。  
Facilitates precise second tier roll handling.

**单体式夹臂轮廓优化**  
Single Arm Geometry

可使夹板更贴近地面，提升对窄幅纸卷的搬运效果。  
Allows pads to get close to the ground improving the handling of narrow rolls.

**受保护的马达**  
Protected Motor

轻便的马达置于框架的保护之下。  
Compact motor located below the frame.

**连续的360°旋转**  
Continuous 360° Rotation

可快速实现水平夹持与垂直夹持方位的互换。  
In both directions quickly transitions to and from bilge positions.

**密封良好的蜗轮和蜗杆**  
Sealed Ring Gear And Pinion

防止外部杂物进入。  
Protects from external debris.

**夹板和夹臂采用多铰接点联接**  
Multi-Hinge Pad To Arm Joint

操作无噪音，可使夹紧力均匀分布在夹板上。  
Provides quiet operation and helps distribute clamp force to the paper roll.

**全宽式上钩设计**  
Full-Width Hook Design

使货物重量均匀地分布在整个横梁上。  
Evenly distributes loading on carriage bar.

**中央定位块**  
Centering Key

使属具准确地挂载在叉车上。  
For proper clamp-to-truck alignment.

